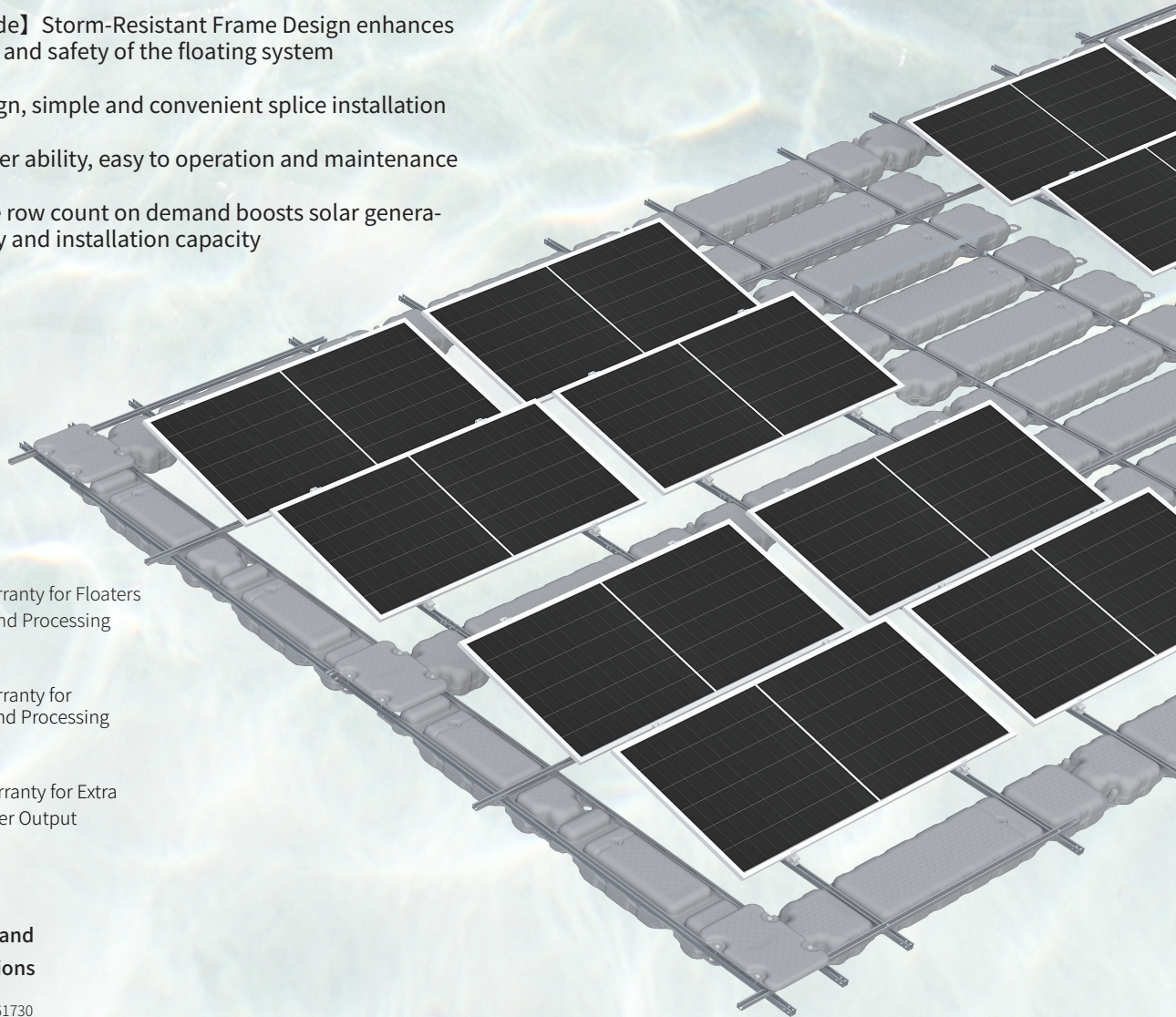


Anchor Standard

- Performance improvement leads to a more than 6.5% power generation gain
- TaiRay wafer & BC technology enhances high product reliability
- **【Ocean-Grade】** Storm-Resistant Frame Design enhances the reliability and safety of the floating system
- Modular design, simple and convenient splice installation
- Strong weather ability, easy to operation and maintenance
- Customizable row count on demand boosts solar generation efficiency and installation capacity



10

10-year warranty for Floaters
Materials and Processing

12

12-year Warranty for
Materials and Processing

30

30-year Warranty for Extra
Linear Power Output

Complete System and Product Certifications

IEC 61215, IEC 61730, UL 61730

AS/NZS 1170, DIN 1055, JIS C8955:2017

International Building Code IBC 2009

California Building Code CBC 2010

ISO9001:2015: ISO Quality Management System

ISO14001: 2015: ISO Environment Management System

ISO45001: 2018: Occupational Health and Safety

IEC62941: Guideline for module design qualification and type approval

LONGI



Anchor Standard

Module Electrical Characteristics STC: AM1.5 1000W/m² 25°C NOCT: AM1.5 800W/m² 20°C 1m/s Test uncertainty for Pmax: ±3%

Module Type	LR9-66HYD-740M		LR9-66HYD-745M		LR9-66HYD-750M		LR9-66HYD-755M		LR9-66HYD-760M	
	STC	NOCT	STC	NOCT	STC	NOCT	STC	NOCT	STC	NOCT
Testing Condition	STC	NOCT	STC	NOCT	STC	NOCT	STC	NOCT	STC	NOCT
Maximum Power (Pmax/W)	740	562.4	745	566.2	750	570.0	755	573.8	760	577.6
Open Circuit Voltage (Voc/V)	49.06	46.61	49.13	46.67	49.20	46.74	49.27	46.81	49.34	46.87
Short Circuit Current (Isc/A)	18.58	14.86	18.62	14.90	18.66	14.93	18.70	14.96	18.74	14.99
Voltage at Maximum Power (Vmp/V)	42.49	40.37	42.64	40.51	42.79	40.65	42.94	40.79	43.09	40.94
Current at Maximum Power (Imp/A)	17.42	13.93	17.47	13.98	17.53	14.02	17.58	14.07	17.64	14.11
Module Efficiency(%)	23.82		23.98		24.14		24.31		24.47	

Temperature Ratings (STC)

Temperature Coefficient of Isc	+0.050%/°C
Temperature Coefficient of Voc	-0.200%/°C
Temperature Coefficient of Pmax	-0.260%/°C

Operating Parameters

Operational Temperature	-40°C ~ +85°C
Protection Class	Class II
Fire Rating	IEC Class C

Module Mechanical Parameters

Weight	38.3kg
Dimension	2384×1303×33mm

Mechanical Loading

Front Side Maximum Static Loading	5400Pa
Rear Side Maximum Static Loading	2400Pa
Hailstone Test	25mm Hailstone at the speed of 23m/s

System Technical Parameter

Floating Material	HDPE, Zn-Al-Mg coating Steel, Aluminum alloy
Wind Speed	60m/s
Snow Load	1.0KN/m ²
Installation Site	Freshwater scenarios such as lakes, water surfaces, or reservoirs
Water Surface Clearance	>200mm
Bearing Weight	> 150KG/PC



Module Floater-M



Walkway Floater-M



Walkway Plate



Beam



Plastic Bolt



Plastic Nut



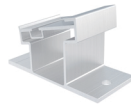
Rear Support Upper Part



Rear Support Lower Part



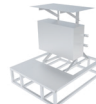
End Clamp Kit



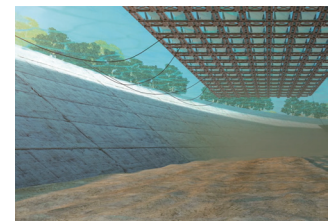
Front Support Kit



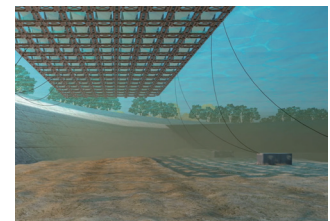
Slot Washer



Inverter Mounting Kit



Shore anchor



Lakebed anchor