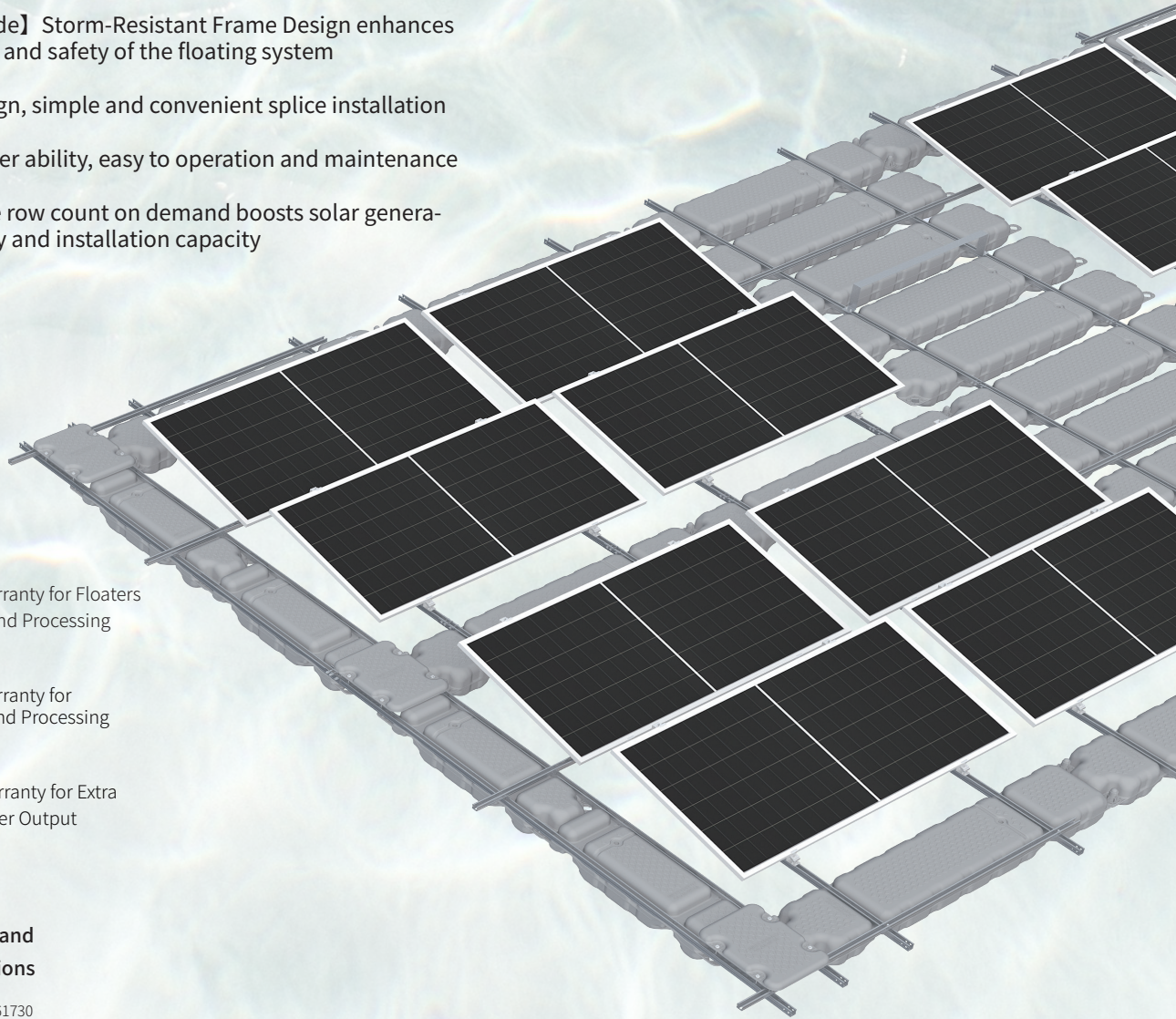


# Anchor Standard

- Performance improvement leads to a more than 6.5% power generation gain
- TaiRay wafer & BC technology enhances high product reliability
- **【Ocean-Grade】** Storm-Resistant Frame Design enhances the reliability and safety of the floating system
- Modular design, simple and convenient splice installation
- Strong weather ability, easy to operation and maintenance
- Customizable row count on demand boosts solar generation efficiency and installation capacity



10

10-year warranty for Floaters  
Materials and Processing

12

12-year Warranty for  
Materials and Processing

30

30-year Warranty for Extra  
Linear Power Output

## Complete System and Product Certifications

IEC 61215, IEC 61730, UL 61730

AS/NZS 1170, DIN 1055, JIS C8955:2017

International Building Code IBC 2009

California Building Code CBC 2010

ISO9001:2015: ISO Quality Management System

ISO14001: 2015: ISO Environment Management System

ISO45001: 2018: Occupational Health and Safety

IEC62941: Guideline for module design qualification and type approval

**LONGI**



# Anchor Standard

**Module Electrical Characteristics** STC: AM1.5 1000W/m<sup>2</sup> 25°C NOCT: AM1.5 800W/m<sup>2</sup> 20°C 1m/s Test uncertainty for Pmax: ±3%

Module Type	LR9-66HYD-740M		LR9-66HYD-745M		LR9-66HYD-750M		LR9-66HYD-755M		LR9-66HYD-760M	
	STC	NOCT	STC	NOCT	STC	NOCT	STC	NOCT	STC	NOCT
Testing Condition	STC	NOCT	STC	NOCT	STC	NOCT	STC	NOCT	STC	NOCT
Maximum Power (Pmax/W)	740	562.4	745	566.2	750	570.0	755	573.8	760	577.6
Open Circuit Voltage (Voc/V)	49.06	46.61	49.13	46.67	49.20	46.74	49.27	46.81	49.34	46.87
Short Circuit Current (Isc/A)	18.58	14.86	18.62	14.90	18.66	14.93	18.70	14.96	18.74	14.99
Voltage at Maximum Power (Vmp/V)	42.49	40.37	42.64	40.51	42.79	40.65	42.94	40.79	43.09	40.94
Current at Maximum Power (Imp/A)	17.42	13.93	17.47	13.98	17.53	14.02	17.58	14.07	17.64	14.11
Module Efficiency(%)	23.82		23.98		24.14		24.31		24.47	

## Temperature Ratings (STC)

Temperature Coefficient of Isc	+0.050%/°C
Temperature Coefficient of Voc	-0.200%/°C
Temperature Coefficient of Pmax	-0.260%/°C

## Operating Parameters

Operational Temperature	-40°C ~ +85°C
Protection Class	Class II
Fire Rating	IEC Class C

## Module Mechanical Parameters

Weight	38.3kg
Dimension	2384×1303×33mm

## Mechanical Loading

Front Side Maximum Static Loading	5400Pa
Rear Side Maximum Static Loading	2400Pa
Hailstone Test	25mm Hailstone at the speed of 23m/s

## System Technical Parameter

Floating Material	HDPE, Zn-Al-Mg coating Steel, Aluminum alloy
Wind Speed	60m/s
Snow Load	1.0KN/m <sup>2</sup>
Installation Site	Freshwater scenarios such as lakes, water surfaces, or reservoirs
Water Surface Clearance	>200mm
Bearing Weight	> 150KG/PC



Module Floater-M



Walkway Floater-M



Walkway Plate



Beam



Plastic Bolt



Plastic Nut



Rear Support  
Upper Part



Rear Support  
Lower Part



End Clamp Kit



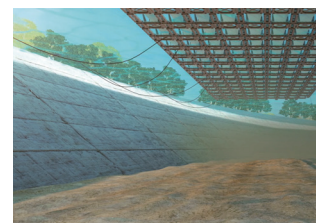
Front Support Kit



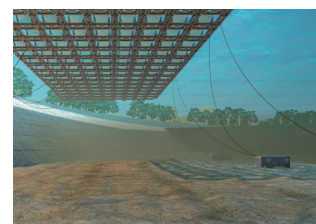
Slot Washer



Inverter Mounting Kit



Shore anchor



Lakebed anchor

# Anchor Pure

- Performance improvement leads to a more than 6.5% power generation gain
- TaiRay wafer & BC technology enhances high product reliability
- Increase the volume of floater to add the buoyant force of floater
- Flexible combination of 4 floater types enables easy adaptation to complex water environments
- Premium aluminum supports: robust connections boost system strength & wind resistance
- Customizable row count on demand for flexible, convenient installation

10

10-year warranty for Floaters  
Materials and Processing

12

12-year Warranty for  
Materials and Processing

30

30-year Warranty for Extra  
Linear Power Output

## Complete System and Product Certifications

IEC 61215, IEC 61730, UL 61730

AS/NZS 1170, DIN 1055, JIS C8955:2017

International Building Code IBC 2009

California Building Code CBC 2010

ISO9001:2015: ISO Quality Management System

ISO14001: 2015: ISO Environment Management System

ISO45001: 2018: Occupational Health and Safety

IEC62941: Guideline for module design qualification and type approval

**LONGI**



# Anchor Pure

**Module Electrical Characteristics** STC: AM1.5 1000W/m<sup>2</sup> 25°C NOCT: AM1.5 800W/m<sup>2</sup> 20°C 1m/s Test uncertainty for Pmax: ±3%

Module Type	LR9-66HYD-740M		LR9-66HYD-745M		LR9-66HYD-750M		LR9-66HYD-755M		LR9-66HYD-760M	
	STC	NOCT	STC	NOCT	STC	NOCT	STC	NOCT	STC	NOCT
Testing Condition	STC	NOCT	STC	NOCT	STC	NOCT	STC	NOCT	STC	NOCT
Maximum Power (Pmax/W)	740	562.4	745	566.2	750	570.0	755	573.8	760	577.6
Open Circuit Voltage (Voc/V)	49.06	46.61	49.13	46.67	49.20	46.74	49.27	46.81	49.34	46.87
Short Circuit Current (Isc/A)	18.58	14.86	18.62	14.90	18.66	14.93	18.70	14.96	18.74	14.99
Voltage at Maximum Power (Vmp/V)	42.49	40.37	42.64	40.51	42.79	40.65	42.94	40.79	43.09	40.94
Current at Maximum Power (Imp/A)	17.42	13.93	17.47	13.98	17.53	14.02	17.58	14.07	17.64	14.11
Module Efficiency(%)	23.82		23.98		24.14		24.31		24.47	

## Temperature Ratings (STC)

Temperature Coefficient of Isc	+0.050%/°C
Temperature Coefficient of Voc	-0.200%/°C
Temperature Coefficient of Pmax	-0.260%/°C

## Operating Parameters

Operational Temperature	-40°C ~ +85°C
Protection Class	Class II
Fire Rating	IEC Class C

## Module Mechanical Parameters

Weight	38.3kg
Dimension	2384×1303×33mm

## Mechanical Loading

Front Side Maximum Static Loading	5400Pa
Rear Side Maximum Static Loading	2400Pa
Hailstone Test	25mm Hailstone at the speed of 23m/s

## System Technical Parameter

Floating Material	HDPE, Zn-Al-Mg coating Steel
Wind Speed	45m/s
Snow Load	1.0KN/m <sup>2</sup>
Installation Site	Freshwater scenarios such as lakes, water surfaces, or reservoirs
Water Surface Clearance	>150mm
Bearing Weight	Module Floater90KG/m <sup>2</sup> , Walkway Floater150KG/m <sup>2</sup>



Module Floater



Short Walkway Floater



Long Walkway Floater



Portrait Walkway Floater



Front Support Kit



Rear Support Kit



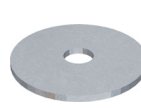
Plastic Bolt



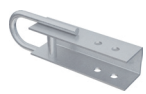
End Clamp Kit



Square Steel



Support Plate



Anchoring Truss



Shape Hoop



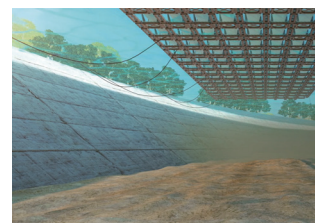
Slot Washer



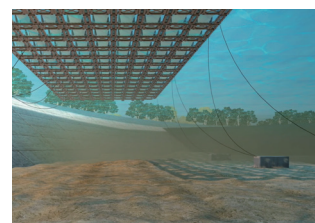
Washer



POM Sleeve



Shore anchor



Lakebed anchor